



# FISCHER

PAPER PRODUCTS

Specialty Bags ■ Flexible Packaging  
Quality Products Since 1972

# About Us

**Fischer Paper Products** has been converting specialty, pinch-bottom paper bags in Antioch, Illinois for over 40 years. Founded by William A. Fischer in 1972, Fischer Paper Products remains a family operated business. President and owner Joshua Fischer, and Vice President of Sales & Marketing William C. Fischer represent the third generation of leadership. While we focus on continuous improvement and upgrades to technology, our commitment to the core values and principles of our founder remains unchanged. We pride ourselves and stake our reputation on superior quality, friendly and helpful service, short lead times, and prompt delivery of our products.



## Our Mission Statement

**Fischer Paper Products** is committed to offering packaging products of the highest quality and the best customer service in the industry. Continuous improvement is the foundation of our growth, allowing us to serve our customers in ways that ensure long-term mutual success. We seek employees who strive to meet these standards in a safe and rewarding working environment.



# Table of Contents

## General Information..... 4

- Service
- Stock Products
- Custom Bags
- Environmental Sustainability

## Terms of Sale ..... 5

- Lead Times
- Order Minimums
- Payment Terms & Discounts
- Artwork, Printing, Plates & Inks
- Freight Terms
- Returned Goods Policy
- Over- & Under-runs

## Bag Basics ..... 6

- Measurement Definitions
- Glossary of Terms

## Foodservice.....7

- Food Safety Compliance..... 7
- Candy & Peanut Bags ..... 8-9
- Popcorn Bags ..... 8-9
- Cookie Bags ..... 8-9
- Pretzel Bags ..... 8-9
- Paper Sandwich Bags ..... 10
- French Fry Bags ..... 11
- Hash Brown & Onion Ring Bags ..... 11
- Hot Dog Bags ..... 12-13
- Pickle Bags ..... 12-13
- Foil Sandwich & Foil Hot Dog Bags..... 12-13
- Carry-out Bags..... 14-15
- Doggie Bags ..... 14-15
- Sub Bags..... 16-17
- Pizza Bags ..... 16-17
- Pizza Slice Bags ..... 16-17
- Breadstick Bags ..... 16-17
- Plain Panel Bags ..... 16-17
- Bread Bags ..... 18-19
- Dry Wax Wraps & Liners ..... 20
- Foil Wraps..... 21

## Glassine Bags ..... 22

- Egg Roll Bags ..... 22-23
- Flat Style Bags ..... 23
- Square Style Bags..... 23

## Hospitality Amenities ..... 24

- Silverware Bags..... 25
- Napkin Ring Bands..... 24-25
- Drinking Glass Covers ..... 24-25
- Sanitary Disposal..... 24-25
- Toilet Seat Bands ..... 26
- Laundry Bags ..... 26

## Retail & Industrial..... 27

- Prescription Bags ..... 28
- Merchandise Bags ..... 28

## File Specifications..... 29

## Artwork Layout.....30

## Index.....31



# General Information

## Service

**Fischer Paper Products** has a well-trained staff of Sales and Customer Service Representatives available to answer any of your questions regarding our stock items, or to help you with a concept or quote for a new custom print job. Please contact us at any time and we will be happy to assist you.

## Stock Products

**Fischer Paper Products** carries a full line of pinch-bottom bags for a variety of packaging needs, including food service, retail, prescription, hotel/motel, industrial markets, and more. These items are listed in the following pages and online at [fischerpaperproducts.com](http://fischerpaperproducts.com).

## Custom Bags

**Fischer Paper Products** excels at customizing your bags to fit your specific needs.

### We can improve your packaging by:

**Customizing the size:** We can manufacture bags of specific sizes, ranging from 1.5" to 21" wide, and from 2" to 30" long.

**Using a specialty grade of paper:** Bleached and natural kraft papers are available in various basis weights from 20# to 60#, with or without grease resistance. We can also provide bleached and opaque glassine, foil-laminated bleached kraft, wet-strength and water-resistant grades, and other paper substrates.

**Providing a window panel:** Panels are ideal for viewing the product inside, such as in our BB-KP series; it can also be placed in the gusset for even greater visibility.

**Running a lined or "duplex" bag:** Two layers of paper can be used to create bags with a liner, such as our stock doggie bags (the 900 series) and ice cream bags (the IC-series).

**Printing your bag in up to four spot colors:** We maintain an in-house Graphic Arts department to assist you in the development and execution of your concept. A list of our file specifications and artwork layout guidelines can be found on pages 29 and 30, and also on our website.



## Environmental Sustainability

**Fischer Paper Products** has been recycling and conserving for decades. We began recycling our papers and managing energy usage over 30 years ago because it just made sense to us. Now that behavior has a name — "sustainability" — and we are proud that principle is part of our company culture. Our sustainability efforts fall into three areas of focus: optimizing energy efficiencies of our facility and equipment; direct recycling practices within our operations; and use of eco-friendly raw materials in the products that we manufacture. Our customers can feel good about the paper bags that **Fischer Paper Products** makes for them; most of our raw materials and standard paper bags are gentle on the Earth.

- All of our papers contain some level of recycled content, ranging from 20% pre-consumer to 100% post-consumer recycled content.
- All of our papers are recyclable, biodegradable, and compostable.
- Our mills are certified by Forest Stewardship Council (FSC) and/or Sustainable Forestry Initiative (SFI) for sustainable forest management.
- Our inks are water-based.
- Our adhesives are derived from plant materials—a renewable resource, like paper itself.

We are happy to work with customers to maximize the sustainability of the products we produce for you. Thank you for joining **Fischer Paper Products** on our journey to a healthier planet.

# Terms of Sale

## Lead Times

Stock orders are generally ready to ship within 48 hours of receipt. Custom orders have a standard lead time of 6–7 weeks, with new order lead times beginning when final artwork is approved. We give all possible consideration to rush orders when requested at the time the order is placed.

## Order Minimums

The minimum order for custom print is 25,000 bags (50,000 for panel bags), unless otherwise specified, due to paper purchasing minimums and other factors.

## Payment Terms & Discounts

We offer standard payment terms of 1% 10 days, net 30 days on the invoice total after freight has been deducted. No cash discounts are allowed on freight, artwork and/or plate charges, or other special charges, which are all billed at cost.

## Artwork, Printing, Plates & Ink

A one-time artwork and plate charge is required on all first-time custom print orders, billed at our cost. Estimates and printing proofs are provided in advance of production. Specific PMS colors may be subject to a matching charge in addition to the artwork fee.

## Freight Terms

Freight for special orders can be quoted as specified by the customer. The options are:

- FOB Antioch, IL 60002
- Delivered to your location. Our freight minimums are 1000# for locations east of the Rocky Mountains, 2000# west of the Rocky Mountains, and 2000# to South Florida.
- Drop shipped to your customer. We will pre-pay and add freight in such these cases.

Charges for special delivery requests such as sorting and segregating, inside delivery, or a method of delivery other than a standard LTL may apply. Any trailer load shipment using a dedicated semi trailer must be specified in advance.

## Returned Goods Policy

Stock merchandise may be returned for credit within six months of purchase with prior written authorization. All returned merchandise must be shipped prepaid and is subject to a 10% restocking charge. We reserve the right to refuse damaged or compromised product, and may assess a fee of 15% on all returned merchandise needing to be repacked. Custom print or custom size orders cannot be returned.

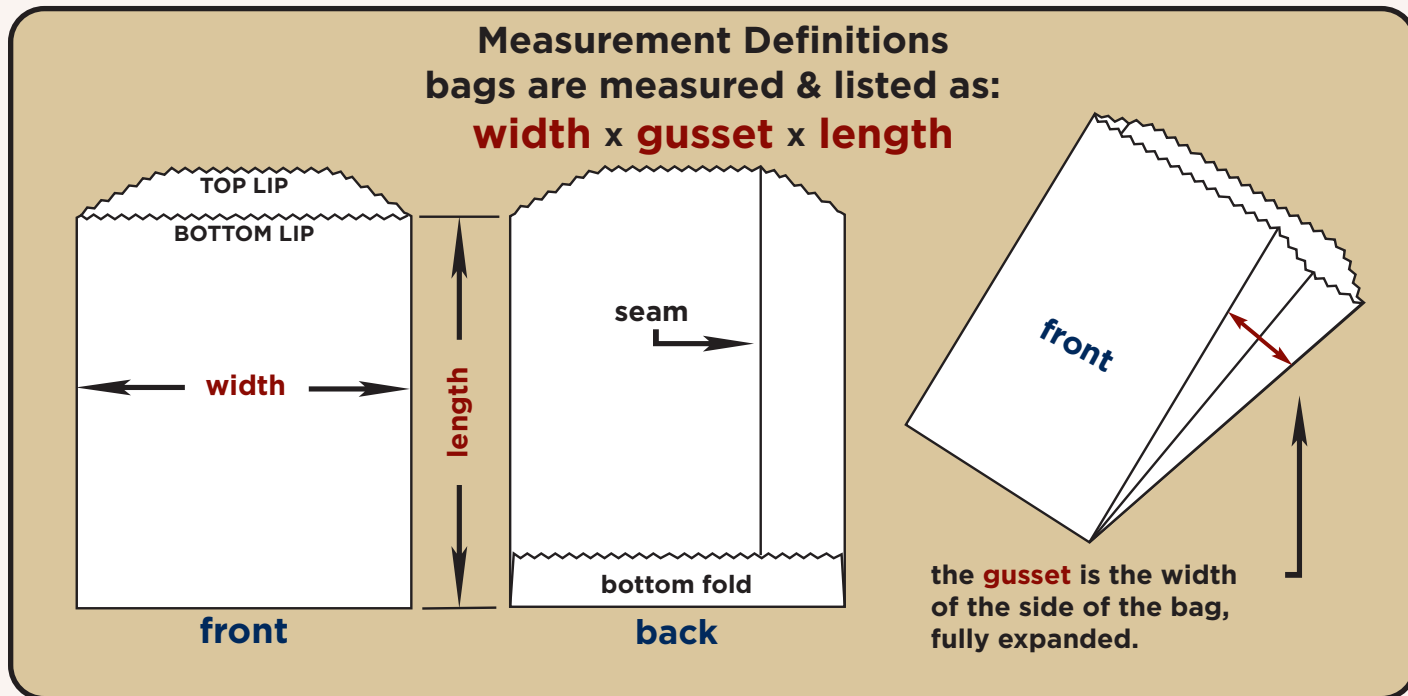
## Over- & Under-runs

Custom orders are subject to a 10% over- or under-run, or as specified in our quotation.

***If you are looking for  
quality packaging solutions,  
look for our logo  
on the back of our stock items:***



# Bag Basics



## Glossary of Terms

<b>Bleached Kraft (BK):</b>	A durable, white uncoated paper. Some forms are Machine Glazed (MG) for smoothness on one or both sides. Its unglazed form has a coarser texture and is referred to as Machine Finished (MF).
<b>Natural Kraft (NK):</b>	Unbleached paper in its natural form—brown in color. It can be MF, MG, or GR.
<b>Dry Wax:</b>	Paper sheet that has a moderate wax coating to provide a moisture or grease barrier and insulation.
<b>Wet Wax:</b>	Paper sheet that has a heavy wax coating to provide a greater moisture barrier and insulation.
<b>Grease Resistant (GR):</b>	Paper that is treated to provide a grease barrier. Commonly used for hot, fried, or microwaveable foods.
<b>Glassine:</b>	A highly polished and compressed sheet, providing grease resistance, which is usually transparent.
<b>Foil Bags:</b>	Bags made from paper that is foil laminated for heat retention. Bags can be constructed with foil in or foil out, depending on the application.
<b>Flat Style Bags:</b>	Bags that do not have a gusset. Measurements listed as width x length.
<b>Square Style Bags:</b>	Three-dimensional bags that have gussets. Measurements listed as width x gusset x length.
<b>Duplex Bag:</b>	A bag constructed of two layers of paper, with the inner layer providing insulation, or sometimes grease resistance.
<b>Double Opening (DO):</b>	A bag style that is open on one side as well as on top. Provides easy access to products such as pastries, sandwiches, soft pretzels, and pizza slices.
<b>Gusset:</b>	The side pleat of a Square Style bag. Its dimension is measured by its open, unfolded state.
<b>Lip:</b>	The top portion on the back side of a bag that extends (usually 5/8") higher than the front side (lip is never included in the overall length measurement).
<b>Panel Bag:</b>	A bag that has a transparent poly window panel running from top to bottom, for easy viewing of products (window panel can sometimes be perforated).

# Foodservice



## Food Safety Compliance

**Fischer Paper Products** is committed to providing products of the highest quality and to complying with all regulations that impact the products we manufacture and ship. As part of our commitment to food safety and quality, we undergo a food safety and sanitation audit annually. The audit is conducted by a nationally respected third-party auditor.



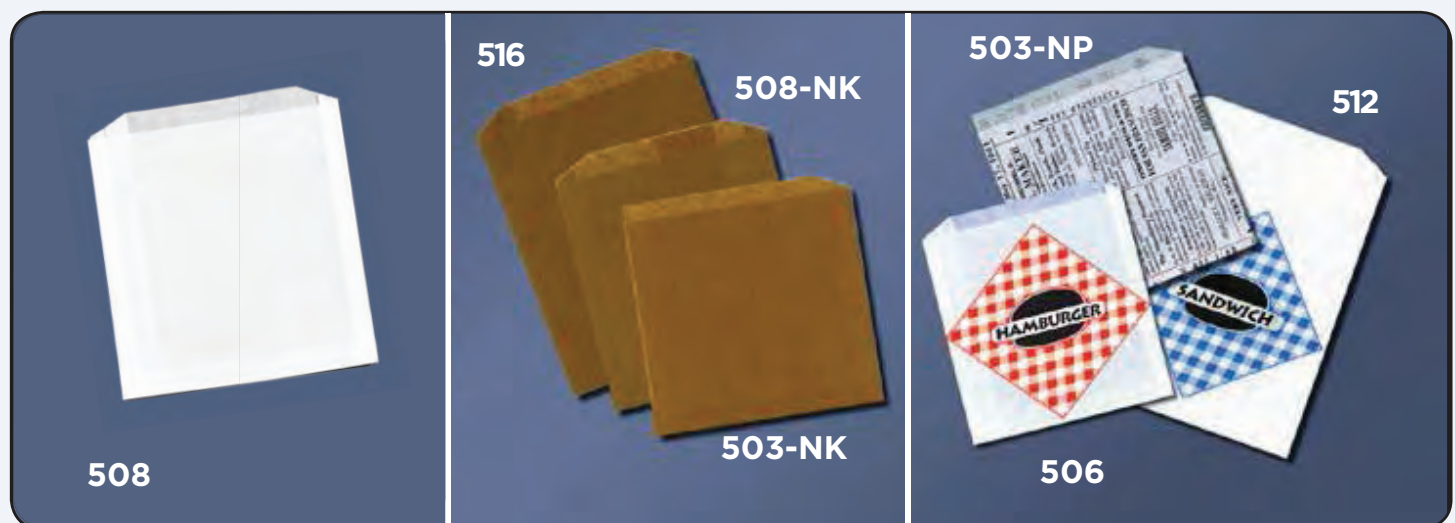
Item #	Description	Size	Pack	Wt.	Cube	Pallet	UPC
<b>Candy &amp; Peanut Bags</b>							▪ made from bleached kraft
301	1/2 lb. plain	4-3/4 x 6-3/4	6/1000	30	1.85	4l 5h	721970001568
302	1 lb. plain	5-3/4 x 7-3/4	4/1000	28	1.75	6l 4h	721970001582
375	printed peanut design	3-1/2 x 6-1/2	2000	9	0.42	15l 8h	721970001780
<b>Popcorn Bags</b>							▪ made from bleached kraft
330	1 lb. printed	3-1/2 x 2 x 8	1000	6	0.42	15l 8h	721970001667
330-PL	1 lb. plain	3-1/2 x 2 x 8	1000	6	0.42	15l 8h	721970001681
332	1-1/2 lb. printed	4 x 2-1/2 x 8-1/4	1000	8	0.42	15l 8h	721970001704
332-PL	1-1/2 lb. plain	4 x 2-1/2 x 8-1/4	1000	8	0.42	15l 8h	721970005665
333	printed	4 x 1-3/4 x 10	1000	8.5	0.56	15l 6h (10 on top)	721970009441
334	jumbo printed	5-1/4 x 12	1000	9.5	0.53	11l 8h	721970001728
<b>Cookie Bags</b>							▪ made from grease resistant bleached kraft
350	printed	4-1/2 x 3-1/2	2000	4	0.29	16l 9h	721970005641
352	printed	4-7/8 x 4	2000	5.3	0.29	16l 9h	721970006013
354	printed	5-1/2 x 1 x 4	2000	7	0.42	15l 8h	721970006020
<b>Pretzel Bags</b>							▪ made from grease resistant bleached or natural kraft
503	plain double opening	7 x 6-3/4	8/1000	44	2.37	6l 3h	721970002183
503-NK	plain nk double opening	7 x 6-3/4	1000	5.9	0.22	20l 8h	721970009267
503-NP	newsprint design double opening	7 x 6-3/4	1000	5.1	0.22	20l 8h	721971011566
590	"pretzel" double opening	7 x 6-3/4	2000	11	0.51	15l 6h	721970007102
1014-PL	plain double opening	8-3/8 x 9	1000	8.2	0.35	16l 9h	721970006501







Item #	Description	Size	Pack	Wt.	Cube	Pallet	UPC
<b>Paper Sandwich Bags</b>							▪ made from grease resistant bleached or natural kraft
503	plain double opening	7 x 6-3/4	8/1000	44	2.37	6l 3h	721970002183
503-NK	plain nk double opening	7 x 6-3/4	1000	5.9	0.22	20l 8h	721970009267
503-NP	newsprint design double opening	7 x 6-3/4	1000	5.1	0.22	20l 8h	721971011566
506	"hamburger"	6 x 3/4 x 6-1/2	6/1000	33	2.43	7l 3h	721970002220
507	"cheeseburger"	6 x 3/4 x 6-1/2	6/1000	33	2.43	7l 3h	721970002268
508	plain	6 x 3/4 x 6-1/2	6/1000	33	2.43	7l 4h	721970002305
508-8	plain	6 x 3/4 x 6-1/2	8/1000	44	3.33	4l 5h	721970002329
508-105	plain	6 x 3/4 x 6-1/2	2000	11	0.56	10l 9h	721970002343
508-NK	plain nk	6 x 3/4 x 6-1/2	1000	5.9	0.42	15l 8h	721970009809
510	plain jumbo	6-1/2 x 1-1/2 x 7-3/4	2000	15	0.83	10l 6h	721970002466
512	extra long "sandwich"	6-1/2 x 1 x 8-1/2	2000	15	1.11	7l 6h	721970002503
513	plain jumbo	7 x 3/4 x 9	1000	8	0.42	15l 8h	721971011542
514	plain wet waxed	6 x 1 x 7	6/1000	47	1.75	9l 4h	721970002527
516	plain nk	6-1/2 x 1 x 8	2000	15	0.91	10l 5h	721970008826



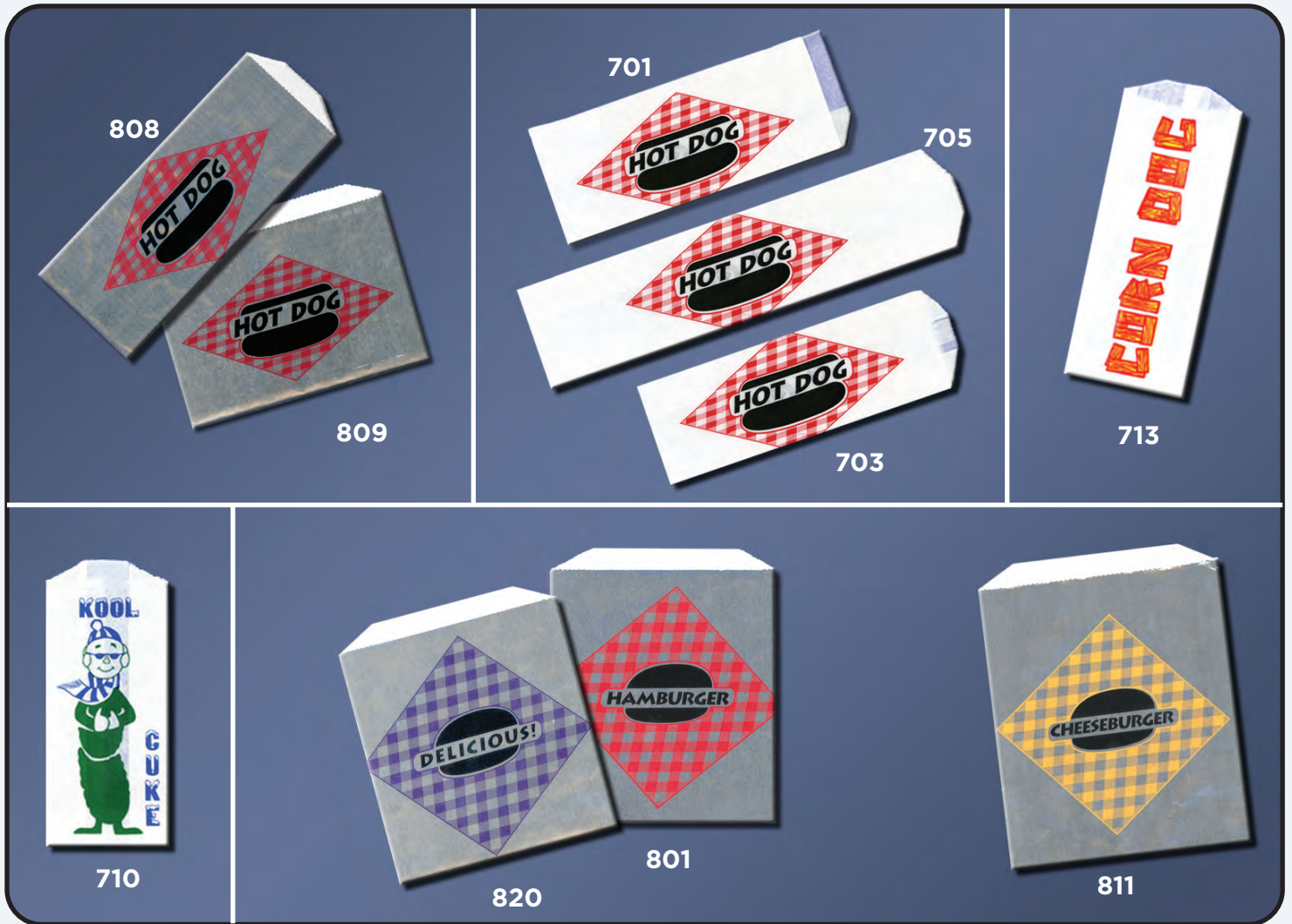


Item #	Description	Size	Pack	Wt.	Cube	Pallet	UPC
<b>French Fry Bags</b> ■ made from grease resistant bleached kraft							
601	printed	4-1/2 x 3-1/2	10/1000	20	1.56	6l 6h	721970002565
601-FF3	printed	4-1/2 x 3-1/2	2000	4	0.29	16l 9h	721970002589
602	plain	4-1/2 x 3-1/2	10/1000	20	1.56	6l 6h	721970002602
602-FF2	plain	4-1/2 x 3-1/2	2000	4	0.29	16l 9h	721970009489
603	printed	4-7/8 x 4	10/1000	26.5	1.56	6l 6h	721970002626
603-FF4	printed	4-7/8 x 4	2000	5.3	0.29	16l 9h	721970002640
604	plain	4-7/8 x 4	10/1000	26.5	1.56	6l 6h	721970002664
604-FF2	plain	4-7/8 x 4	2000	5.3	0.29	16l 9h	721970009502
605	printed	5-1/2 x 1 x 4	8/1000	28	2.67	5l 5h	721970002688
605-FF5	printed	5-1/2 x 1 x 4	2000	7	0.42	15l 8h	721970002701
606	plain	5-1/2 x 1 x 4	8/1000	28	2.67	5l 5h	721970002725
607	printed	5-1/2 x 1 x 8	5/1000	31.5	3.00	4l 5h	721970002749
607-FF8	printed	5-1/2 x 1 x 8	2000	12.5	0.74	10l 6h	721970002763
608	plain	5-1/2 x 1 x 8	5/1000	31.5	3.00	4l 5h	721970002787
608-FF2	plain	5-1/2 x 1 x 8	2000	12.5	0.74	10l 6h	721970009540
616	plain	5 x 1 x 4	2000	6	0.42	15l 8h	721971011269
<b>Hash Brown &amp; Onion Ring Bags</b> ■ made from various grease resistant papers							
609	plain bleached glassine	4-3/4 x 3/4 x 5-3/4	2000	9.6	0.42	15l 8h	721970002800
611	plain hash brown 40# grbk	3-3/4 x 5	1000	6	0.28	15l 10h	721970009342
610	"onion rings"	5-1/2 x 1 x 4	8/1000	28	2.67	5l 5h	721970002848



Item #	Description	Size	Pack	Wt.	Cube	Pallet	UPC
<b>Hot Dog Bags</b>			■ made from bleached grease resistant paper				
701	"hot dog" double opening	3-1/2 x 2-1/4 x 8-1/4	5/1000	22.5	1.62	6l 5h	721970002886
702	plain double opening	3-1/2 x 2-1/4 x 8-1/4	5/1000	22.5	1.62	6l 5h	721970002909
703	"hot dog"	3 x 2 x 8-3/4	5/1000	27	1.62	6l 5h	721970002923
703-6A	"hot dog"	3 x 2 x 8-3/4	2000	11	0.51	15l 6h	721970002947
704	plain	3 x 2 x 8-3/4	5/1000	27	1.62	6l 5h	721970002961
705	"hot dog" foot long	3 x 2 x 12	2000	14.5	0.91	9l 5h	721970002985
706	plain foot long	3 x 2 x 12	2000	14.5	0.91	9l 5h	721970003005
713	"corn dog"	3 x 3/4 x 7	2000	8	0.65	11l 6h	721970003043
<b>Pickle Bags</b>			■ made from grease resistant bleached kraft				
710	"kool cuke"	3 x 2 x 6-1/2	2000	8	0.33	16l 8h	721970003029
710-1	"kool cuke"	3 x 2 x 6-1/2	1000	4	0.22	20l 8h	721970012205
<b>Foil Sandwich &amp; Foil Hot Dog Bags</b>			■ made from foil laminated paper ■ used by concession operations when heat retention is desirable				
801	"hamburger"	6 x 3/4 x 6-1/2	1000	10	0.49	11l 8h	721970003067
802	"cheeseburger"	6 x 3/4 x 6-1/2	1000	10	0.49	11l 8h	721970003081
806	plain	6 x 3/4 x 6-1/2	1000	10	0.49	11l 8h	721970003142
819	"chicken"	6 x 3/4 x 6-1/2	1000	10	0.49	11l 8h	721970003326
820	"delicious"	6 x 3/4 x 6-1/2	1000	10	0.49	11l 8h	721970003340
810	jumbo "hamburger"	6-1/2 x 1-1/2 x 7-3/4	1000	13.3	0.65	10l 6h	721970003227
811	jumbo "cheeseburger"	6-1/2 x 1-1/2 x 7-3/4	1000	13.3	0.65	10l 6h	721970003241
812	jumbo plain	6-1/2 x 1-1/2 x 7-3/4	1000	13.3	0.65	10l 6h	721970003265
814	jumbo "delicious"	6-1/2 x 1-1/2 x 7-3/4	1000	13.3	0.65	10l 6h	721970008529
808	"hot dog"	3-1/2 x 1-1/2 x 8-3/4	1000	10	0.42	15l 8h	721970003166
808-PL	plain	3-1/2 x 1-1/2 x 8-3/4	1000	10	0.42	15l 8h	721970003180
813	"hot dog" foot long	3-1/2 x 1-1/2 x 12	1000	12.8	0.53	11l 8h	721970003289
813-PL	plain foot long	3-1/2 x 1-1/2 x 12	1000	12.8	0.53	11l 8h	721970003302
809	"hot dog" wallet style	7 x 2 x 5	1000	9.8	0.42	15l 8h	721970003203





Item #	Description	Size	Pack	Wt.	Cube	Pallet	UPC
<b>Carry-out Bags</b>		<ul style="list-style-type: none"> <li>▪ bleached kraft insulated with a foil or natural kraft liner</li> <li>▪ IC-15 is made from grease resistant bleached kraft</li> </ul>					
8B-1	"hot-to-go" pint	4 x 3 x 10	1000	19	0.79	9l 5h	721970003524
8B-2	plain pint	4 x 3 x 10	1000	19	0.79	9l 5h	721970003548
8B-3	"hot-to-go" quart	5 x 3-3/4 x 12	1000	28	1.25	9l 4h	721970003562
8B-4	plain quart	5 x 3-3/4 x 12	1000	28	1.25	9l 4h	721970003586
8B-5	"hot-to-go" 1/2 gallon	6-1/2 x 4-3/8 x 15	500	21	0.90	8l 6h	721970003609
8B-6	plain 1/2 gallon	6-1/2 x 4-3/8 x 15	500	21	0.90	8l 6h	721970003623
8B-BQ	"ribs to go"	6-1/2 x 4-3/8 x 20	250	14.5	0.51	8l 6h	721970008505
IC-13	plain duplex	5-1/2 x 3-1/2 x 13	500	25	1.15	5l 8h	721970004903
IC-14	plain duplex	7 x 4-1/2 x 14-1/4	500	30	1.59	4l 6h	721970004927
IC-15	"ice cream sandwich"	4-1/2 x 1 x 5-3/4	1000	4.3	0.22	20l 8h	721970007621
<b>Doggie Bags</b>		<ul style="list-style-type: none"> <li>▪ made from bleached kraft with a grease resistant bleached kraft liner</li> </ul>					
11A-2	plain	5 x 3 x 12	500	14	0.53	11l 8h	721970005121
900	poodle design	5 x 3 x 12	500	14	0.53	11l 8h	721970003722
903	"thank you" design	5 x 3 x 12	500	14	0.53	11l 8h	721970003784

## Provide your company logo to design & create a custom print bag!

Supply us with your logo or art to get started. We will work with you every step of the way to ensure that your needs and expectations are met.

You can find file specifications and artwork layout information on pages 29 and 30 of this catalog.



8B-3



8B-BQ



8B-2



IC-14

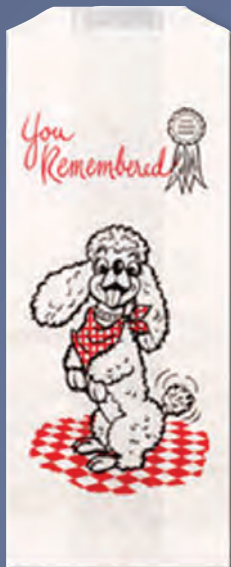
IC-13



IC-15



11A-2



900



903



Our Doggie & "To Go" bags make everyone happy, including the family pet!



Call us now to discuss your options.



Item #	Description	Size	Pack	Wt.	Cube	Pallet	UPC
<b>Sub Bags</b>							■ made from bleached kraft
1050	printed	4-1/2 x 2 x 14	1000	15.9	0.93	10l 5h	721970004026
1050-PL	plain	4-1/2 x 2 x 14	1000	15.9	0.93	10l 5h	721970004019
1080	printed	4-1/2 x 2 x 16	1000	17.9	0.83	10l 5h	721970009106
1080-PL	plain	4-1/2 x 2 x 16	2000	35.8	1.67	6l 4h (1 on top)	721970010089
<b>Pizza Bags</b>							■ made from bleached kraft
1007-PL	plain	12 x 15	1000	28	1.19	25 css	721970003999
2021	printed	12 x 15	1000	28	1.19	25 css	721970006327
2022	printed	14 x 1 x 17	1000	41	1.74	4l 4h	721970006341
2024	printed	16 x 1 x 20	1000	55	2.10	4l 6h (1 on top)	721970006389
2025	printed	16 x 2 x 20	1000	58	2.10	4l 6h (1 on top)	721970006402
2027	printed	19 x 2 x 24	500	41	1.52	4l 6h	721970006440
<b>Pizza Slice Bags</b>							■ made from grease resistant bleached or natural kraft
503	plain double opening	7 x 6-3/4	8/1000	44	2.37	6l 3h	721970002183
503-NK	plain nk double opening	7 x 6-3/4	1000	5.9	0.22	20l 8h	721970009267
1012	"pizza slice" double opening	7 x 6-3/4	2000	11	0.51	15l 6h	721970004002
1014	"pizza slice" double opening	8-3/8 x 9	1000	8.2	0.35	16l 9h	721970006488
1014-PL	plain double opening	8-3/8 x 9	1000	8.2	0.35	16l 9h	721970006501





Item #	Description	Size	Pack	Wt.	Cube	Pallet	UPC
<b>Breadstick Bags</b>		▪ made from grease resistant bleached kraft					
1060	"breadsticks"	5 x 3 x 12	1000	16.8	0.90	8l 6h	721970005064
1060-PL	plain	5 x 3 x 12	1000	16.8	0.90	8l 6h	721970006068
<b>Plain Panel Bags</b>		▪ made from grease resistant bleached or natural kraft					
1120	grnk panel	5-1/2 x 2 x10 (2-7/8" panel)	1000	12.5	0.83	12l 5h	721970012564
1165	grbk panel	4-1/4 x 1-1/4 x 6-1/2 (1-1/2" panel)	2000	12.8	0.74	10l 6h	721970012601



2027,  
2024,  
2021



Custom  
Print



1165

1120



Item #	Description	Size	Pack	Wt.	Cube	Pallet	UPC
<b>Bread Bags</b>		■ a variety of sizes & printed styles including bleached & natural kraft, panel and foil bags					
BB-12	plain	4 x 2 x 12	1000	12	0.65	10l 6h	721970004125
BB-14	plain round loaf	8-1/2 x 4-1/2 x 14	1000	30.3	1.48	6l 5h	721970004149
BB-15	plain nk round loaf	8-1/2 x 4-1/2 x 14	1000	30.3	1.48	6l 5h	721970009281
BB-16	plain	5-1/4 x 2-3/4 x 16	1000	21.9	1.00	7l 6h	721970004163
BB-18	plain	5 x 3 x 18	1000	24.5	0.97	7l 6h	721970004187
BB-20	plain	5-1/4 x 3-1/4 x 20	1000	29	1.53	6l 5h	721970004245
BB-22	plain	5-1/4 x 3-1/4 x 18	1000	26	0.97	7l 6h	721970004269
BB-23	plain nk italian	5-1/4 x 3-1/4 x 18	1000	26	1.39	7l 6h	721970009304
BB-24	plain	5 x 3 x 24	1000	31	1.78	6l 5h	721970004248
BB-26	plain	6 x 3-1/2 x 18	1000	27	1.39	7l 5h	721970004323
BB-28	plain	4-1/2 x 2-1/2 x 28	1000	32	2.01	34 css	721970004347
BB-31	"italian bread"	5-1/4 x 3-1/4 x 18	1000	26	0.97	7l 6h	721970004361
BB-35	"french bread"	4-1/2 x 2-1/2 x 24	1000	27	1.78	6l 5h	721970004385
BB-35-PL	plain	4-1/2 x 2-1/2 x 24	1000	27	1.78	6l 5h	721970009847
BB-36	plain nk french	4-1/2 x 2-1/2 x 24	1000	27	1.78	6l 5h	721970009328
BB-37	"french bread"	4-1/2 x 2-1/2 x 28	1000	32	2.01	34 css	721970004408
BB-KP-14	printed nk panel	8-1/2 x 4-1/2 x 14 (4-1/2" panel)	1000	27.5	1.48	6l 5h	721971011429
BB-KP-18	printed nk panel	6 x 2-1/2 x 18 (3" panel)	1000	24.3	1.39	7l 5h	721970007584
BB-KP-26	printed nk panel	3-1/2 x 2 x 26 (1-1/2" panel)	1000	23	1.56	6l 5h	721970007607
BB-KP-28	printed nk panel	4-1/2 x 2-1/2 x 28 (1-3/4" panel)	1000	30.5	2.01	34 css	721970007522
BB-52	foil "garlic bread"	5-1/4 x 3-1/4 x 20	500	21.5	1.02	8l 6h	721970006167





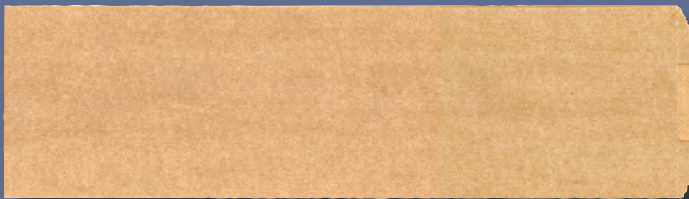
BB-35



BB-31



BB-52



BB-23

BB-KP-28

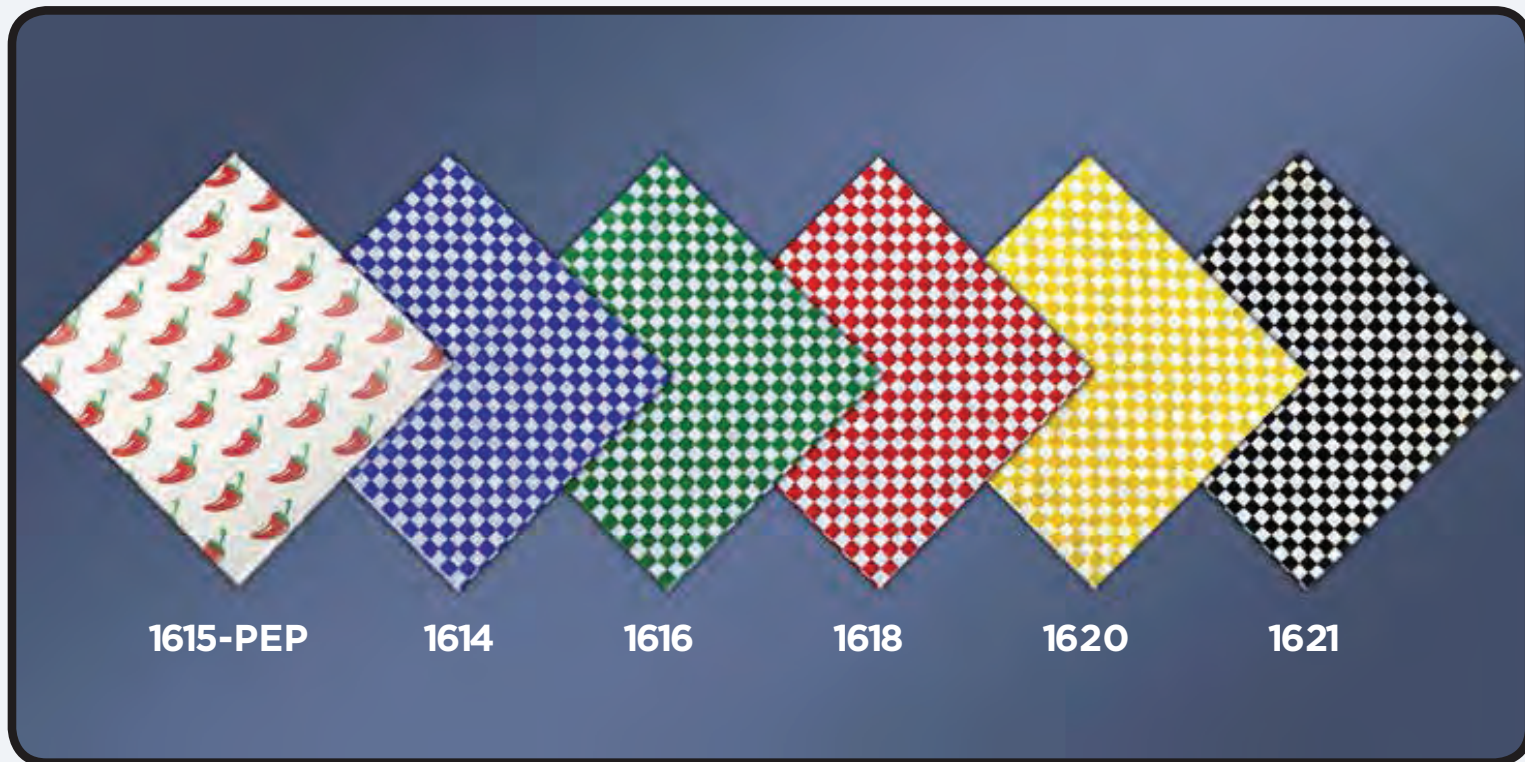
BB-KP-26

BB-KP-18



### Custom Print Bread Bags





1615-PEP

1614

1616

1618

1620

1621

Item #	Description	Size	Pack	Wt.	Cube	Pallet	UPC
<b>Dry Wax Wraps &amp; Liners</b>					<b>■ ideal for sandwich wraps or lining baskets &amp; trays</b>		
1602	plain	12 x 12	6/1000	42.5	1.18	9l 4h	721970006549
1604	plain	12 x 16	4/1000	38	1.00	8l 6h	721970006563
1600-15	plain	15 x 15	4/1000	38.8	1.28	6l 6h	721971010842
1610	red checkerboard	9 x 12	6/1000	32	1.18	9l 4h	721970006624
1614	blue checkerboard	12 x 12	6/1000	42.5	1.18	9l 4h	721970006662
1615-PEP	red peppers	12 x 12	4/1000	25.5	0.65	9l 8h (3 on top)	721970008147
1616	green checkerboard	12 x 12	6/1000	42.5	1.18	9l 4h	721970006686
1618	red checkerboard	12 x 12	6/1000	42.5	1.18	9l 4h	721970006709
1620	yellow checkerboard	12 x 12	6/1000	42.5	1.18	9l 4h	721970006723
1621	black checkerboard	12 x 12	6/1000	42.5	1.18	9l 4h	721970007140
1622	yellow checkerboard	12 x 16	4/1000	38	1.00	8l 6h	721970006747
1624	red checkerboard	12 x 16	4/1000	38	1.00	8l 6h	721970006761

Item #	Description	Size	Pack	Wt.	Cube	Pallet	UPC
<b>Foil Wraps</b>		▪ made from quilted laminated foil ▪ used by concession operations when heat retention is desirable					
61	plain	10-1/2 x 13	5/500	23	0.43	10l 6h	721970006808
62	red pattern	10-1/2 x 13	5/500	23	0.43	10l 6h	721970006822
63	blue pattern	10-1/2 x 13	5/500	23	0.43	10l 6h	721970006846
65	plain	14 x 16	2/500	15	0.34	9l 13h	721970006884
66	plain	10-1/2 x 14	5/500	25	0.47	10l 6h	721970006907
66-CB	“cheeseburger”	10-1/2 x 14	5/500	25	0.47	10l 6h	721970006945
66-HB	“hamburger”	10-1/2 x 14	5/500	25	0.47	10l 6h	721970006983
66-HD	“hot dog”	9 x 12	5/500	17	0.34	12l 6h	721970007003
67	plain	9 x 12	5/500	17	0.34	12l 6h	721970007041
67R	red pattern	9 x 12	5/500	17	0.34	12l 6h	721970007089



61, 62, 63

66-HD, CB, HB



# Glassine Bags



Item #	Description	Size	Pack	tT.	Cube	Pallet	UPC
<b>Egg Roll Bags</b>				■ made from bleached glassine ■ ideal for Asian takeout, wontons, chow mein, etc.			
204-P	1/2 lb. printed	3 x 1-3/4 x 6-3/4	12/1000	58	3.56	4l 3h	721970001063
208-P	1 lb. printed	3-1/2 x 2-1/4 x 7-3/4	8/1000	54	3.33	4l 4h	721970001162
212-P	2 lb. printed	4 x 2-3/4 x 9	6/1000	53	2.43	7l 3h	721970001261
<b>Flat Style Bags</b>				■ ideal packaging for food or other items that require clarity and/or grease resistance			
201	plain	2 x 3-1/2	36/1000	46	3.00	4l 4h	721970001001
205	1 oz. plain	2-3/4 x 4-1/4	20/1000	40	1.75	6l 4h	721970001087
209	plain	3 x 5-1/2	20/1000	52	3.00	4l 4h	721970001186
211	plain	3-1/4 x 4-3/4	20/1000	50	3.00	4l 4h	721970001223
213	2 oz. plain	3-3/4 x 5	20/1000	60	3.00	4l 4h	721970001285
215	1/4 lb. plain	3-3/4 x 6-1/4	16/1000	59	3.00	4l 4h	721970001322
217	1/2 lb. plain	4-3/4 x 6-3/4	12/1000	56	3.56	4l 3h	721970001360
219	plain	5-1/2 x 5-3/4	12/1000	60	3.56	4l 3h	721970001407
221	1 lb. plain	5-3/4 x 7-3/4	8/1000	53	2.67	5l 4h	721970001445
223	2 lb. plain	6-3/4 x 9	6/1000	54	2.43	7l 3h	721970001483
225	plain	10 x 11	1000	15	0.53	11l 8h	721970001506
<b>Square Style Bags</b>				■ ideal packaging for food or other items that require clarity and/or grease resistance			
202	1/4 lb. plain	2-1/2 x 1-1/4 x 6-1/4	16/1000	59	3.89	4l 3h	721970001025
204	1/2 lb. plain	3 x 1-3/4 x 6-3/4	12/1000	58	3.56	4l 3h	721970001049
206	3/4 lb. plain	3-1/2 x 1-1/2 x 7-3/4	8/1000	47	3.33	4l 4h	721970001100
208	1 lb. plain	3-1/2 x 2-1/4 x 7-3/4	8/1000	54	3.33	4l 4h	721970001148
212	2 lb. plain	4 x 2-3/4 x 9	6/1000	53	2.43	7l 3h	721970001247
214	2-1/2 lb. plain	4 x 2-3/4 x 11	1000	10.5	0.42	15l 8h	721970001308
216	3 lb. plain	4-1/2 x 3-1/4 x 9-3/4	1000	11	0.42	15l 8h	721970001346
218	4 lb. plain	5 x 3-1/4 x 11	1000	13	0.56	15l 6h	721970001384
220	5 lb. plain	5-1/2 x 3-1/4 x 12	1000	15	0.65	10l 6h	721970001421
222	6 lb. plain	6 x 3-1/2 x 13	1000	17	0.65	10l 6h	721970001469



# Hospitality Amenities



Stock & Custom Print



41700 series



401



410

411

490





Item #	Description	Size	Pack	Wt.	Cube	Pallet	UPC
<b>Silverware Bags</b> ■ made from glassine or bleached kraft							
400	plain glassine	2-3/4 x 10	5/2000	43	2.43	7l 4h	721970001865
4-MG	plain bk	2-3/4 x 10	2000	8.6	0.42	15l 8h	721970001803
4-MG-52	plain bk	2-3/4 x 10	5/2000	43	3.00	4l 5h	721970001827
4-NK	plain nk	2-3/4 x 10	2000	8.6	.42	15l 8h	721970017743
<b>Napkin Ring Bands</b> ■ made from bleached or natural kraft ■ adhesive applied for sealing							
4-NAP-NK	brown	1-1/2 x 4-1/2	2000	1.6	0.56	12l 5h	721970009380
41703	white	1-1/2 x 4-1/2	10/2000	16	0.56	12l 5h	721970009984
41704	black	1-1/2 x 4-1/2	10/2000	16	0.56	12l 5h	721970010027
41705	blue	1-1/2 x 4-1/2	10/2000	16	0.56	12l 5h	721970009922
41706	burgundy	1-1/2 x 4-1/2	10/2000	16	0.56	12l 5h	721970009946
41707	green	1-1/2 x 4-1/2	10/2000	16	0.56	12l 5h	721970009960
41708	red	1-1/2 x 4-1/2	10/2000	16	0.56	12l 5h	721970010003
<b>Drinking Glass Covers</b> ■ made from bleached kraft							
402	"water glass" bk	3-1/2 x 2 x 7-3/4	2000	12	0.65	10l 6h	721970001902
<b>Sanitary Disposal</b> ■ made from bleached or natural kraft							
410	printed	4 x 2 x 9	2000	15.3	0.81	10l 5h	721970001988
410-1	printed	4 x 2 x 9	1000	7.6	0.42	15l 8h	721970001940
411	printed nk	4 x 2 x 9	1000	10	0.69	15l 5h	721970009403
490	sani bag dispenser	4-1/4 x 2 x 10-1/8	6	6	0.66	16l 4h	721970002169



Item #	Description	Size	Pack	Wt.	Cube	Pallet	UPC
<b>Toilet Seat Bands</b>			■ made from bleached or natural kraft				
414	printed	1-1/2 x 16	5/1000	20	0.73	4l 6h	721970002008
415	printed nk	1-1/2 x 16	5/1000	20	0.73	4l 6h	721970009465
<b>Laundry Bags</b>			■ made from bleached or natural kraft				
416	printed	17 x 24	500	39	1.38	4l 6h	721970002022

## Fischer Paper Products

now offers a more convenient shippable inner carton for our redesigned 414 and 415 Toilet Seat Bands.



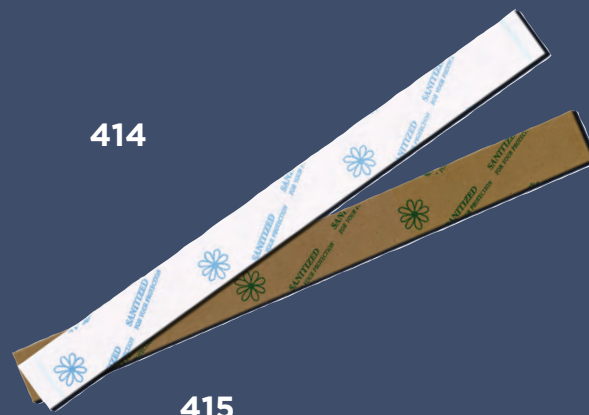
- Packed 1,000 per box
- 5 boxes per master case
- Made of durable white corrugate, ideal for shipping



416



414



415

# Retail & Industrial



Custom Print Merchandise Bags

## Custom Print Prescription Bags



Item #	Description	Size	Pack	Wt.	Cube	Pallet	UPC
<b>Prescription Bags</b>							▪ made from bleached kraft
1303-PL	plain	3-1/2 x 1-1/2 x 10	2000	18.2	0.83	12l 5h	721970005283
1305-PL	plain	5 x 2 x 10	2000	25	1.25	7l 5h	721970005306
<b>Merchandise Bags</b>							▪ made from bleached or natural kraft
1701	bleached	6-1/4 x 9-1/4	1000	10.2	0.56	15l 6h	721970008185
1702	natural	6-1/4 x 9-1/4	1000	10.2	0.56	15l 6h (10 on top)	721970008208
1703	bleached	8-1/2 x 11	1000	16.4	0.65	10l 6h	721970008222
1704	natural	8-1/2 x 11	1000	16.4	0.81	10l 5h	721970008246
1705	bleached	12 x 15	1000	28	1.19	25 css	721970008260
1706	natural	12 x 15	1000	28	1.19	25 css	721970008284
1707	bleached	12 x 3 x 18	500	26.2	1.15	5l 8h	721970008307
1708	natural	12 x 3 x 18	500	26.2	1.15	5l 8h	721970008321
1709	bleached	14 x 3 x 21	500	34.3	1.59	4l 6h	721970008345
1710	natural	14 x 3 x 21	500	34.3	1.59	4l 6h	721970008369
1711	bleached	17 x 4 x 24	500	46	1.92	4l 6h	721970008383
1712	natural	17 x 4 x 24	500	46	1.92	4l 6h	721970008406
1713	bleached	10 x 13	1000	22.3	0.91	6l 5h	721970008420
1714	natural	10 x 13	1000	22.3	0.91	6l 5h	721970008444
1716	natural	7-1/2 x 10	1000	13.3	0.83	12l 5h	721970008482
1717	bleached	10 x 2 x 15	1000	28	1.19	25 css	721971010828
1718	natural	10 x 2 x 15	1000	28	1.48	25 css	721971010842
1721	bleached	5 x 7-1/2	1000	6.8	0.33	16l 8h	721971011504
1722	natural	5 x 7-1/2	1000	6.8	0.42	15l 8h	721970008567

### Bleached Kraft Merchandise Bags



- Recyclable, reusable and compostable
- Made in the USA

### Natural Kraft Merchandise Bags



- NK bags are 100% post consumer recycled content

# File Specifications

Our customer service staff includes a prepress graphic designer to help you develop your company logo or other design concept into vectored artwork, suitable for flexographic printing. If you have questions or would like information about developing your own custom print bag, please contact us. We look forward to working with you, making suggestions, helping develop your ideas, and exploring the possibilities that product customization offers.

## Acceptable Media Files

- CD-ROM
- Illustrator (.eps), (.pdf) files
- Stuffed (.sit) or zipped (.zip) files (under 7MB) e-mailed to us

## Compatible Programs\*

- Illustrator (CC or earlier)
- Photoshop (CC or earlier)
- InDesign (CC or earlier)

## Required File Elements

- Workable Illustrator vector files (.eps)
- Files for all fonts used
- All linked art files (.eps, .tif, .jpg, etc.)
- Any specific dimensions or layout of graphics (positioning, bleeds, size, etc.)

## Bar Codes

- For optimal percentage of scanning, the smallest UPC size should be 100% and set up to be in the machine direction.
- Colors that contain red in the formulas can have a very low scanning rate. Contact us to discuss the material and colors to attain the highest scanning rate.

## Tips

- Always include a sample for reference, or a PDF of artwork.
- (.jpg), (.tif), and (.gif) files are not vector formats, and will have to be redrawn, unless they are to be printed as one color screens of the image.
- All ™, ®, and © marks should be 7 pt. font or larger.
- Try to avoid any fonts smaller than 6 pt. positive print, 8 pt. for copy reversed.
- Artwork may contain a maximum of 4 colors (Pantone Uncoated).
- All line strokes outlining another color should be a minimum 2 pt. stroke.
- We have to trap all adjacent colors in artwork. This result can sometimes produce additional colors or effects that may or may not be desired (e.g., yellow + blue = green).

## Screen Specifications

- Line Screen = 65 lpi maximum
- Line Angle = 38 degrees
- Screen Gains/Cutback = 15%
- All screens, including single color Gradient Screens = minimum 5%, maximum 80%

## Trap

- Our trap specification is 1/32" minimum, per color. This requires a minimum line thickness of the dominant color of 1/16".
- Due to registration tolerances, process work is not recommended.

## Please Note

- Printing is done on a flexographic press, using rubber or polymer plates. In most cases, artwork plates will need to be distorted to attain the correct print size.
- Do not send files with transparency.
- Please remove all unused elements, masks and stray points from the file.

## Negatives

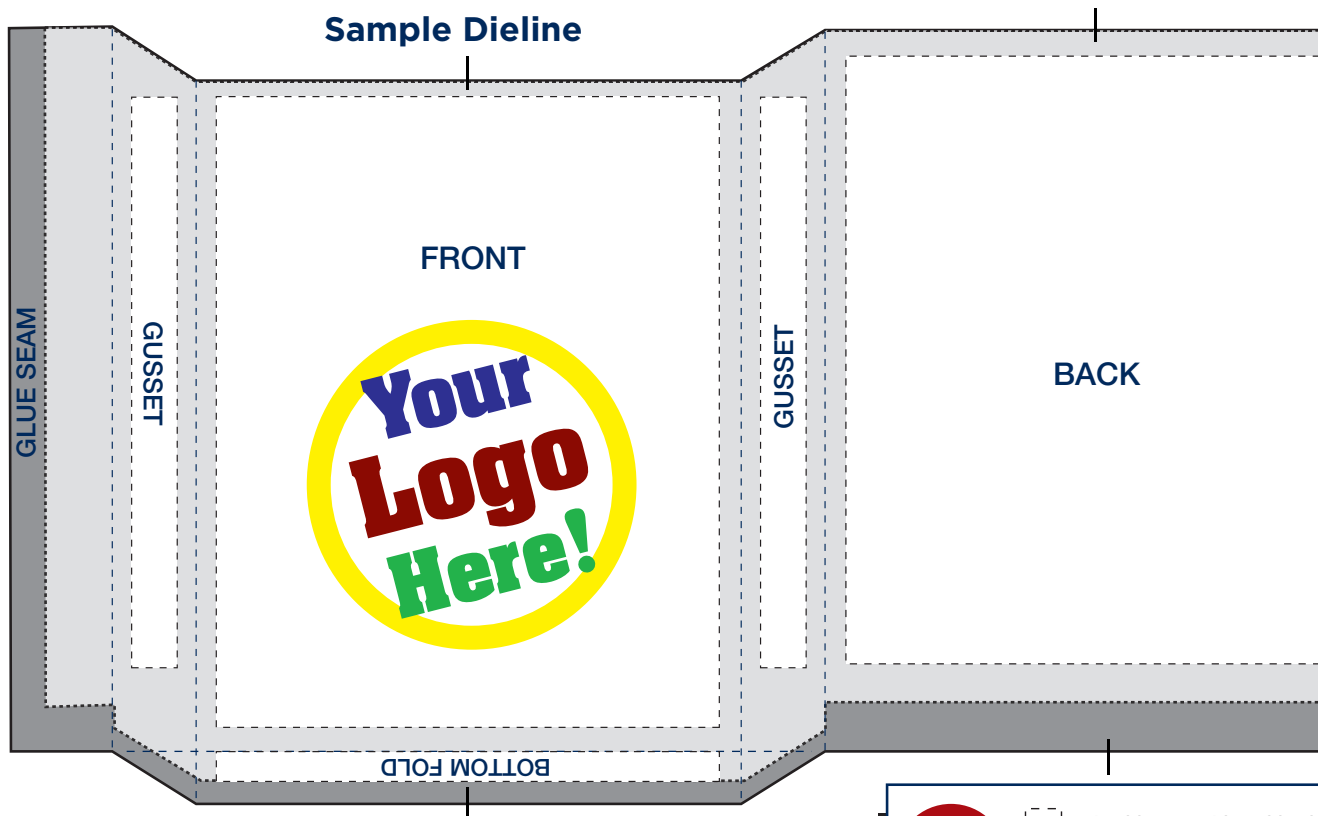
If you wish to provide negatives from which plates can be produced, they should be right reading, emulsion up, .007 matte film.

\*All programs current as of July 2018.



# Artwork Layout

We can help you choose the best stock or custom size for your packaging needs. Upon your request, we can send you a layout template or “Dieline” as a guide to help with the artwork layout for your bag.



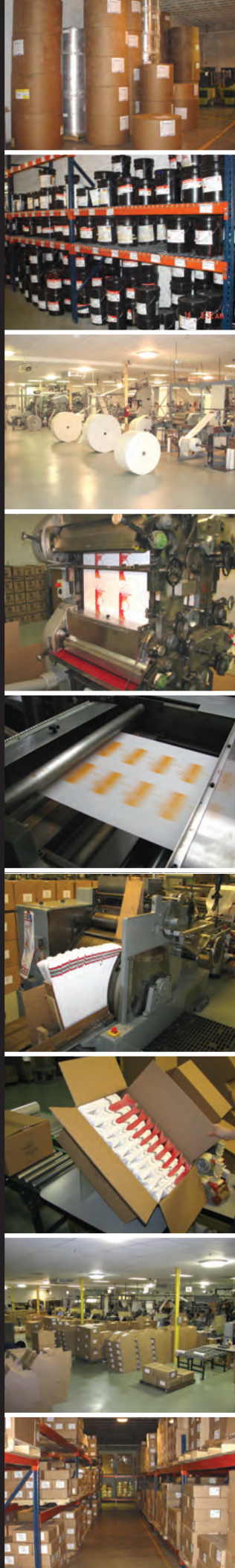
*We can customize your bags using up to four spot colors!*



- Fischer Paper Products** will provide you with layout proofs once we have received artwork files and a purchase order. These proofs are provided mainly to display color separations and layout, and may not display the effects of screen values on a flexographic press.
- Printed stock ink samples can be provided upon request.
- All artwork not supplied to us will be replicated to the best of our ability.
- All placed artwork without bleeds should be at least 1/4” from all folds or edges.
- Any fonts used within the artwork that are not supplied or outlined may be substituted with the nearest possible match from our font library.
- Bags with full coverage or bleeds must allow for color voids where glue is to be applied, and also allow for a maximum 1/8” void of color along the back seam. A maximum 1/4” void of color, usually placed on the bottom, back fold of the bag, is also necessary to allow for adjoining the top of the flexographic plate to the bottom around the cylinder (see non-printable areas in Sample Dieline above).

# Index

Basket Liners .....	20
Bath Mat .....	26
Bread Bags .....	18
Breadstick Bags .....	17
Candy Bags .....	8
Carry-out Bags (Foil) .....	14
Carry-out Bags (Paper) .....	14
Cheeseburger Bags .....	10, 12
Corn Dog Bag .....	12
Doggie Bags .....	14
Double Opening Bags .....	8, 10, 16
Drinking Glass Covers .....	25
Duplex Bags .....	14
Egg Roll Bags .....	23
French Fry Bags .....	11
Glassine Bags .....	23
Hamburger Bags .....	10, 12
Hash Brown Bag .....	11
Hot Dog Bags (Foil) .....	12
Hot Dog Bags (Paper) .....	12
Ice Cream Bags .....	14
Laundry Bags .....	26
Merchandise Bags (NK and BK) .....	28
Napkin Ring Bands .....	25
Onion Ring Bag .....	11
Panel Bags .....	17, 18
Peanut Bags .....	8
Pickle Bag .....	12
Pizza Bags .....	16
Pizza Slice Bags (Double Opening) .....	16
Popcorn Bags .....	8
Prescription Bags .....	28
Pretzel Bags (Double Opening) .....	8
Sandwich Bags (Foil) .....	12
Sandwich Bags (Paper) .....	10
Sanitary Disposal Bags .....	25
Silverware Bags .....	25
Sub Bags .....	16
Toilet Seat Bands .....	26
Wraps (Dry Wax) .....	20
Wraps (Quilted Foil) .....	21



# FISCHER

## PAPER PRODUCTS

Visit us at [fischerpaperproducts.com](http://fischerpaperproducts.com)  
for images of all our stock products.

This catalog is printed on paper containing up to 30% recycled content.



Phone: (800) 323-9093 Fax: (847) 395-8619  
179 Ida Avenue, Antioch, IL 60002