

**This Color Key is for design and color placement approval only! It is NOT an exact indication of color.** Please refer to a Pantone® Solid Coated Inks Color Guide for color. Please also note our dry offset UV inks are semi-translucent and Pantone® colors listed will appear faded on clear or translucent products due to the substrate. Please note: White ink will not print under any other colors and a substitute color is used to show white ink placement on proofs. However, white ink will be used to print on the final printed product.

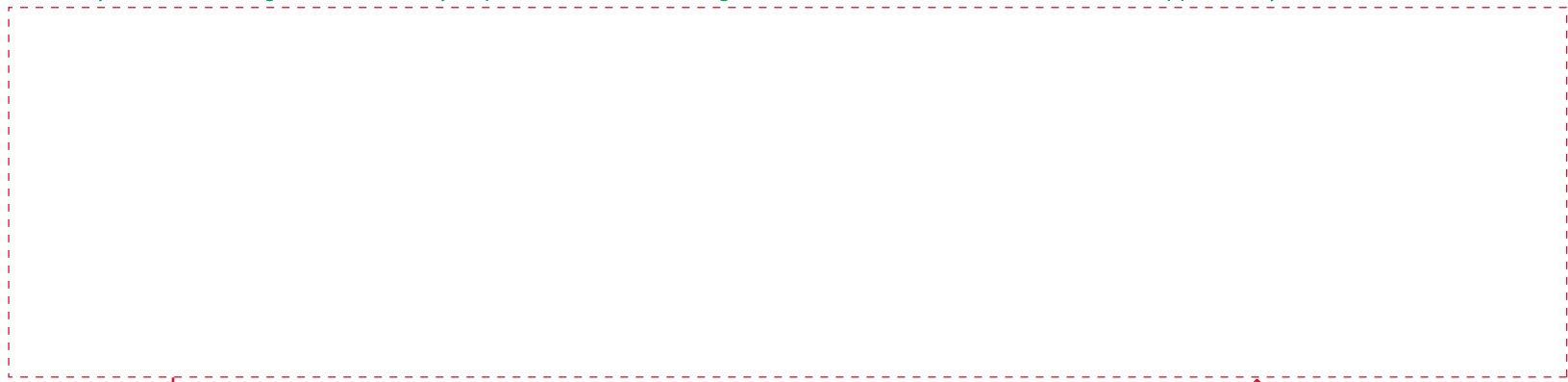
Do not adjust, manipulate or change the current design file being sent out for art approval by Fabri-Kal, because designs are based on the Part Number sent for Art Approval.

Corporate Sales Office: 1 (800) 888-5054 Art Approval Form

All aspects of the designs must be approved by the customer and not limited to:

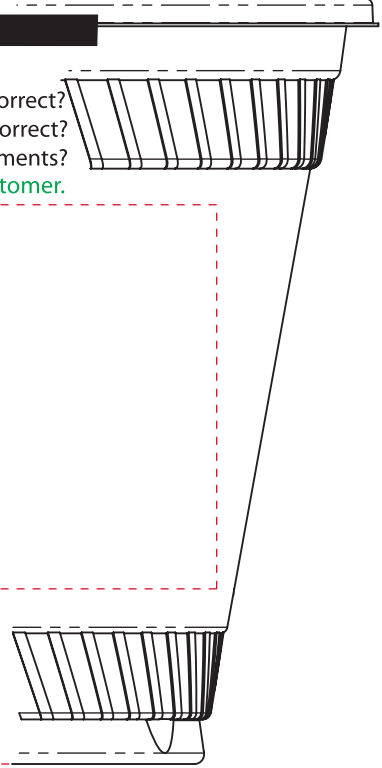
- Has each Registered and Trademarked logo been properly and lawfully approved for use on the design by their owners?
- Is the Net Weight correct?
- Is the spelling and punctuation correct with special attention to names, phone numbers and addresses?
- Are the colors and color placement correct?
- Is the Ingredient declaration correct and in proper sequence?
- Does the information conform with Federal, State, and Local requirements?

Please carefully review the design, and submit any required revisions. All designs/revisions from Fabri-Kal must have final approvals by the customer.



KC12S NT Imprint Area = 2" X 8.4375"

Imprint area begins approximately .9" from the bottom of the cup.



**Part No. ? KC12S ? INK COLORS:**



Above are the Part Number and Pantone® Solid Coated Ink Colors that will be used to print your design.

Please be sure all aspects of the design are correct and lawful usage of logos are complete. Fabri-Kal assumes no liabilities for illegal and/or incorrect copy approved by the customer. Fabri-kal will do everything we can to recognize possible issues, it is the customer's responsibility to approve a design for use. Each design must be approved and received by the Fabri-Kal Art Department in order to further process order requests.

By approving this design by hardcopy or via digitally (ex: email or other), I/(customer) acknowledge everything to be correct and in accordance to the law. I/(customer) also understand the documented statements included and accept and authorize Fabri-Kal to proceed.

This color will indicate placement of White ink if used in the design.



Tapered products are printed using a dry offset printing process, common occurrences such as: blurring, variation in ink density causing slight color shifts and fine detail being lost or filling in should be expected and is acceptable. Based upon that acknowledgement there will be differences between this proof and the final printed product and is consider acceptable.

Approved By: \_\_\_\_\_ Date: \_\_\_\_\_